

### DRIVEWAY DETERIORATION

Bluewater, Ontario

After every heavy rain fall, the driveway (200' X 8') deteriorated to the point that it could not be used.

Typar Geocells was only solution to reinforce the ground surface and to prevent deterioration so that rain water would flow freely without damaging the soil surface.

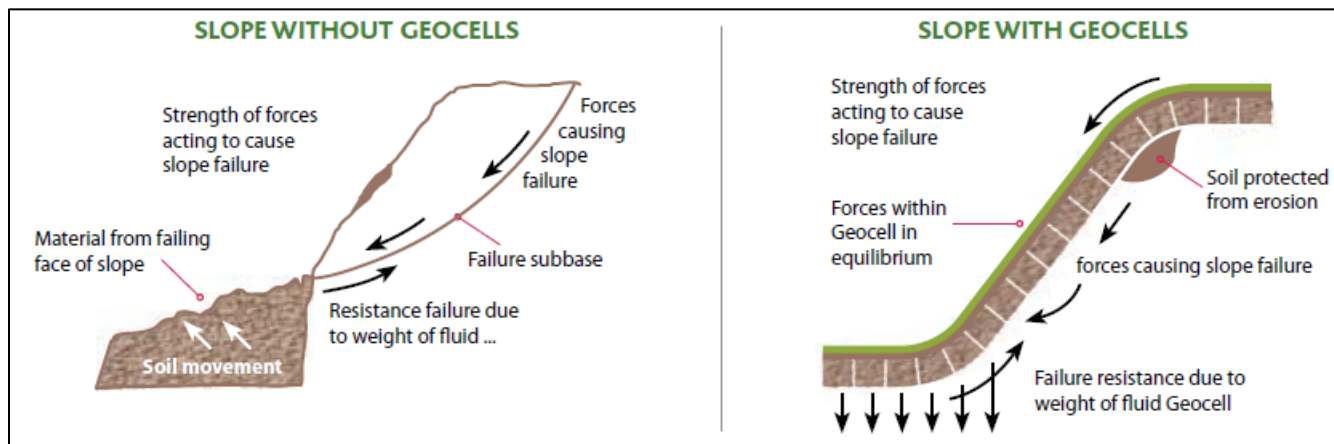
#### *What is Typar Geocells?*

Geocells (Cellular Confinement System) is an innovative solution for ground and slope stabilisation, erosion control and retaining structures.

Typar Geocells can be used in many slope protection applications often eliminating complicated and expensive construction techniques. Its three dimensional structure provides a blanket of 'cells' on the slope surface which can contain a variety of infill materials depending on the application (topsoil, sand, gravel, large stones and cobbles, and concrete of various strengths). This greatly improves resistance to erosive forces such as rainwater run-off on steep or unstable slopes.

Typar Geocell are anchored to slope surfaces using Typar J-Pins; these combined with the weight of the infilled system prevent the system from slipping down the slope.

Precipitation percolating into Typar Geocells must be able to drain. Typar Geocells, with its unique material characteristics, offers this without requiring wall weakening perforations.



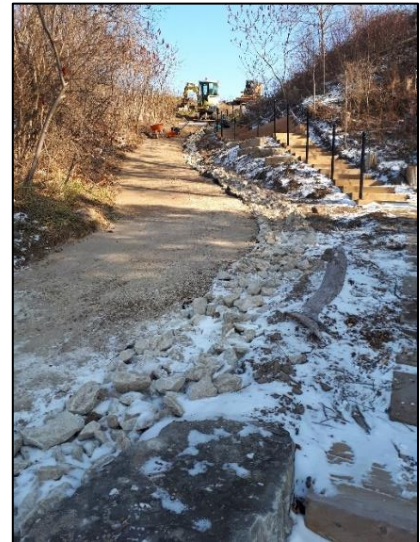
### Steps used to install Typar Geocells

- 1) Level and smooth out the surface of the 200' x 8' driveway
- 2) Roll out the Typar Geotextile (3401G-014)
- 3) Install Typar Geocells over top of the geotextile (350-100)
- 4) Anchor the Geocells with 21" J-Pins
- 5) Fill the Geocells with sand/crushed stone
- 6) Compact the surface

*After a rainfall, the runoff leaves deep ruts in the driveway with sand and pebbles accumulating at the bottom.*

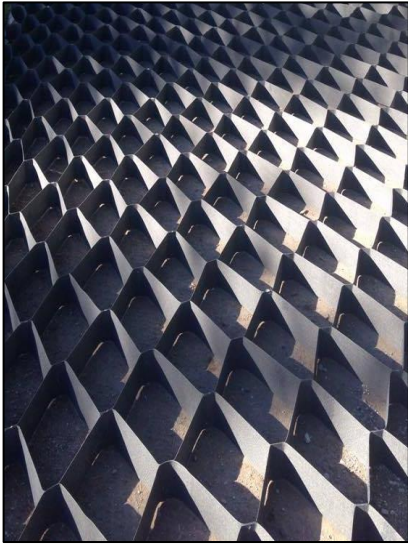


*Levelling and smoothing out the surface of the 200' X 8' driveway.*

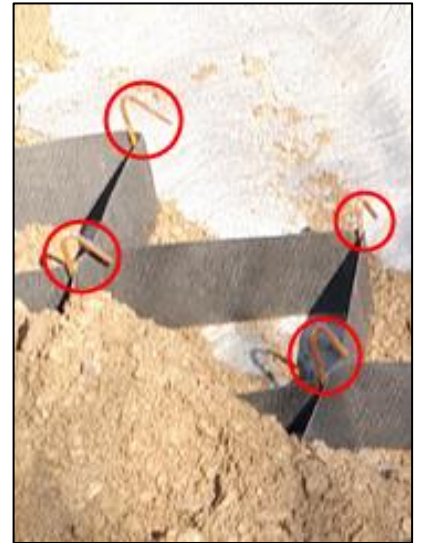




*Roll out the Typar Geotextile and place the Typar Geocells on top.*



*Geocells filled with sand/crushed stone and anchored with 21" J-Pins.*



**Typar Geocells will provide a long lasting solution to resolve the constant deterioration of the driveway.**